

BATTERY-POWERED WORKSHOP ELECTROMAGNET

RTB

SCOPE

Our **RTB** magnet serie consists of rectangular three-pole electromagnets with incorporated battery and charger.

They are recommended for use in a workshop to handle metal parts in bulk or individually :

- parts for machining,
- loading of workstations,
- shipping,
- cleaning of machines.

Thanks to their robustness and **reliability**, they are perfect for intense and daily applications in :

- mechanical workshops,
- boiler making and body work,
- iron & steel dealer activities,
- cleaning and servicing.

TECHNICAL DESCRIPTION

The **RTB** are built around a **self-supporting** frame ensuring magnetic conductivity, protection, suspension and support of the device's electric and magnet-ic components. The main components are :

- a mechanically fitted-welded frame, made of high magnetic permeability steel. The mechanical fittings and support surfaces are machined for a better conditioning of the magnets,
- a suspension yoke continuously welded to the frame,
- a concentric winding with reinforced insulation,
- a fill-in resin blocking and insulating the coil in the frame (H or C class depending on usage),
- a removable protective battery cover,
- a standardized, service-free sealed 12 V



battery, providing an electric capacity of 52 Ah or 110 Ah,

- a regulated electronic charger incorporated in the casing,
- a casing protecting the battery and electronic components.

The electric control panel protected in the frame includes :

- a "magnetize/stop" pushbutton,
- a "magnet on" indicator,
- a "battery low - recharge" indicator and audible signal,
- a charge monitoring display,
- remote control and charger power connectors.

INSTALLATION MODALITIES

The **RTBs** can be installed on any lifting device (overhead crane, truck crane, gantry crane, etc.) by the suspension yoke or a hook or a chain.

SPÉCIFICATIONS

Performances vary according to various parameters :

- characteristics of the products to be lifted,
- clearance between the products and the magnet,
- temperature of the products.

The effect of the load's thickness and clearance on lifting capacity is detailed in the curve on the reverse side.

Two RTB electromagnet types are offered according to their length : **360 et 600 mm.**

ADDED FEATURES

- Mechanically fitted-welded single-block frame, extremely resistant to shocks and wear,
- Magnetic circuit protection against external particles and moisture,
- Protected connecting box,
- Standard battery,
- Stand-alone and adaptive machine,
- Light weight.

USAGE MODE

The lifting magnet is battery driven independent of any electric power supply. The battery is recharged by a 220 V single-phase power supply.

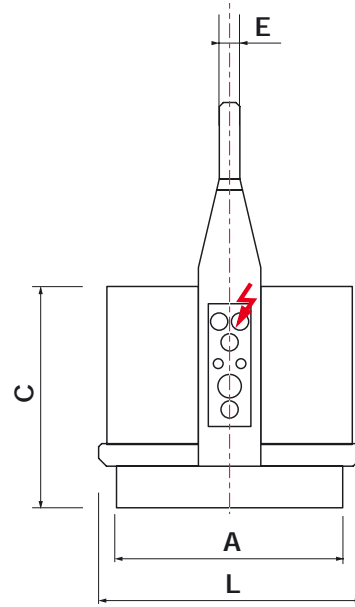
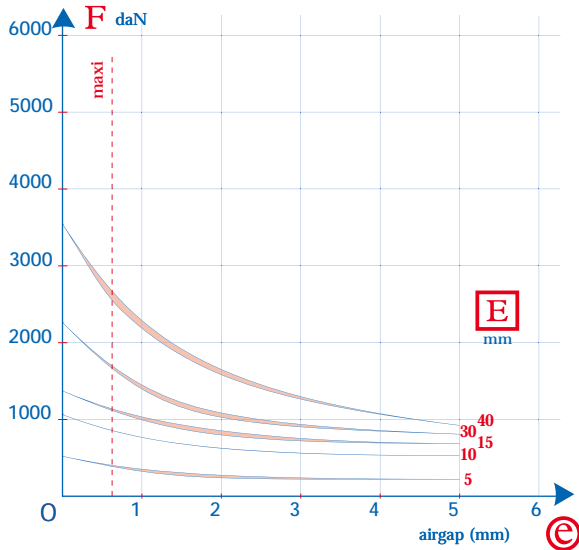
No special servicing or maintenance is required except a periodic check of the electrical connections, suspension links, and frame and battery for wear.

TECHNICAL DATA

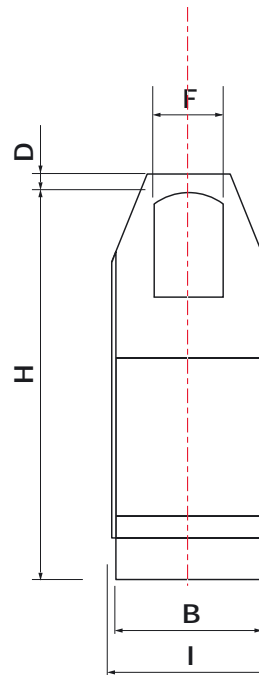
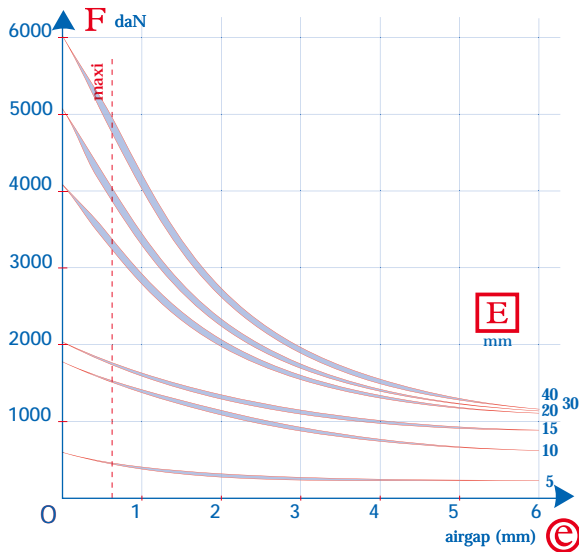
RTB

We provide after-sales service all marks and types of devices.

RTB 36



RTB 60



TYPE	Weight kg	Magnet power at 20° W	Battery voltage VDC	Battery capa. Ah	Bat. discharge period FM 50%	max separ. forces vs 0,8mm clearanc Kgf	Dimensions (mm)								
							A	B	C	D	E	F	H	I	L
RTB 36	100	200	12	52	8 h	2300	360	240	355	35	30	90	520	260	410
RTB 60	165	300	12	110	8 h	3900	600	240	355	35	30	90	520	260	650

The lifting capacity diagrams above indicate the separation forces versus the clearance "e" in mm. The load thickness E in mm is indicated as a parameter. For thicknesses < 40 mm, the separation forces increase slightly. The max. lines indicate the F values for a clearance equal to B/300.

OPTIONS

- Boîtier de commande à distance
- Levier de manœuvre
- Autre puissance batterie
- Autres dimensions sur mesure
- Serie spéciale pour manipulation de produits chauds

